

**PORTLAND EMPOWERED**  
*Championing Voice in Education*

## PARENT & FAMILY ENGAGEMENT MANIFESTO

*As the parents, students, and community members who make up Portland Empowered, we are committed to ensuring that Portland's public high schools engage parents and communities in a way*

- ◆ Values face to face relationships
- ◆ Creates safe spaces where everyone is welcome and valued as an expert
- ◆ Requires parents, schools and communities to work together to improve results
- ◆ Works hard to include the whole range of voices in decision-making processes
- ◆ Is accessible to parent and community leaders from diverse backgrounds
- ◆ Has sufficient resources devoted to it

### **Contact us!**

Emily Thielmann: 207-780-5868,  
emily.thielmann@maine.edu

Pious Ali: 207-807-4283,  
ali.pious@maine.edu

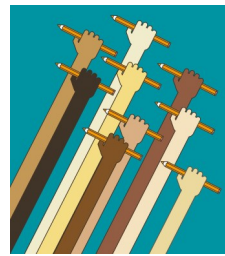
Follow our Facebook Page!

<https://www.facebook.com/portlandempowered>

**CONNECTORS • SKILL-BUILDERS • CHAMPIONS**



English, February 2016



**PORTLAND EMPOWERED**  
*Championing Voice in Education*

## MANIFESTO DAS OBRIGAÇÕES DOS PAIS & FAMÍLIA

*Como pais, estudantes, e membros da comunidade que formam Portland Empowered, nós estamos empenhados para garantir que as escolas secundárias públicas de Portland envolvam pais e comunidades de*

- ◆ Valorize relacionamentos face a face
- ◆ Crie espaços seguros onde todos sejam bem-vindos e valorizados como especialistas
- ◆ Exija que pais, escolas e comunidades trabalhem juntos para melhorar resultados
- ◆ Se esforce para incluir toda a gama de vozes em processos de toma de decisão
- ◆ Seja acessível a pais e líderes de comunidades de origens diversas
- ◆ Tenha suficiente recursos dedicados a si

### **Entre em contato com a gente!**

Emily Thielmann: 207-780-5868,  
emily.thielmann@maine.edu

Pious Ali: 207-807-4283, ali.pious@maine.edu  
Siga nossa página no Facebook!

<https://www.facebook.com/portlandempowered>

**CONECTORES • CAPACITADORES • DEFENSORES**



Portuguese, February 2016